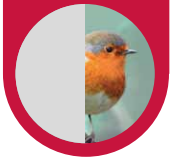
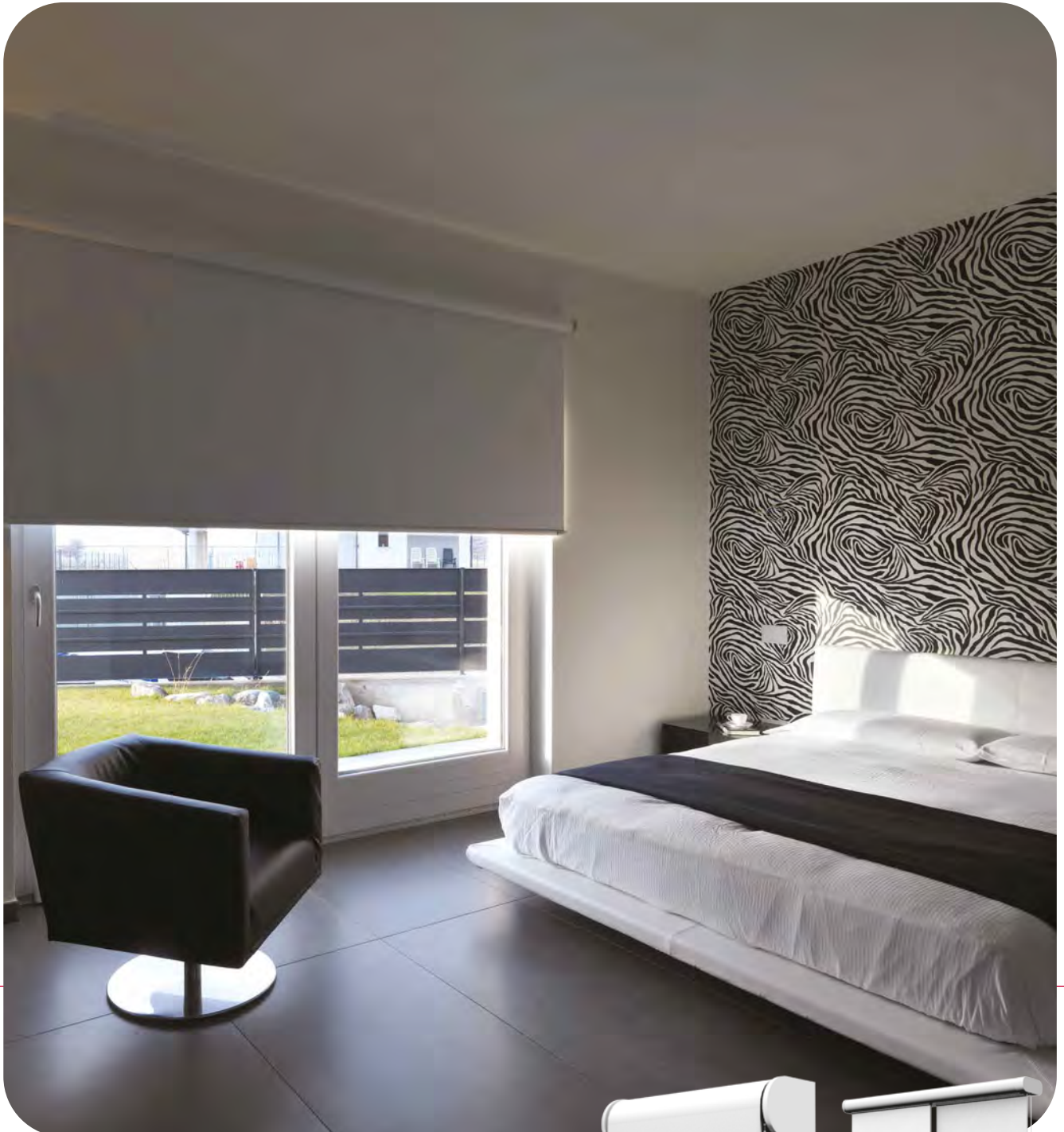


blackout



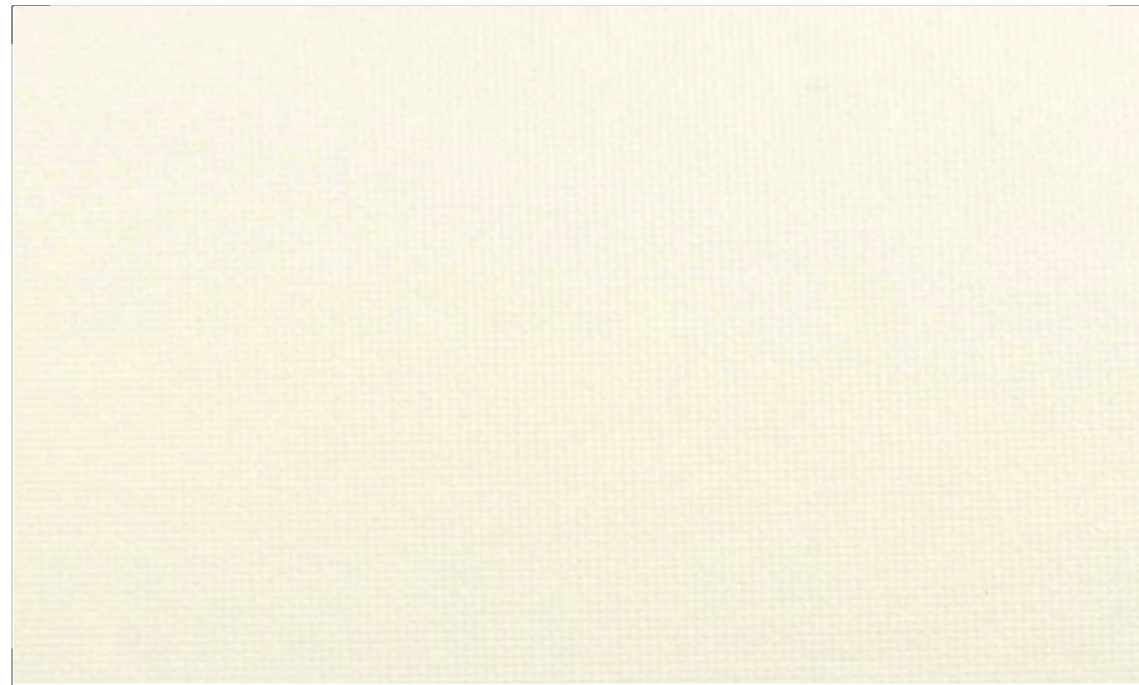
nevaluz®
collections

blackOut

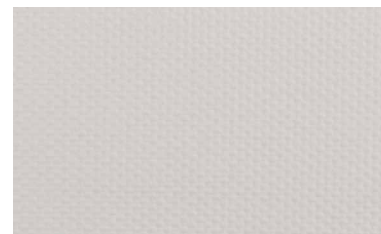


estore**rollable** / panel**japonés**
roller**blinds** / panel**track**

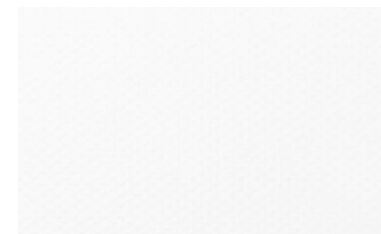
905



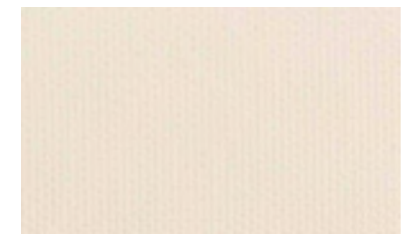
868



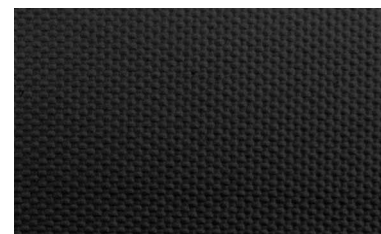
900



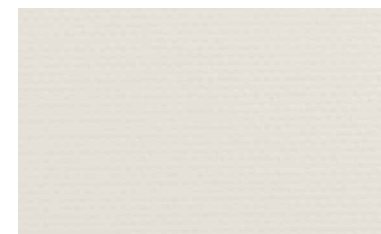
938



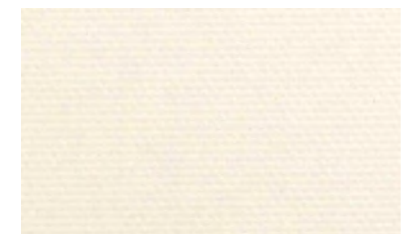
964



010



113




743



Datos técnicos Technical info

 Peso 537 g/m² ± 5 %
Weight 537 g/m² ± 5 %

 25 % Fibra de vidrio
25 % Fiberglass
75 % PVC

 Resistencia a la luz
Light fastness
AATCC 16-2003
Class 4.5 (After 80 AFU)

 Anchos 183 - 300 cm
Widths 183 - 300 cm

 Factor de Apertura 0 %
Openess Factor 0 %

 Limpiar con agua jabonosa
Clean with soapy water

 Espesor 0,29 mm ± 5 %
Thickness 0,29 mm ± 5 %

 Resistente al fuego
Fire resistance
NFPA701(USA)

La información contenida en esta hoja es indicativa y no puede ser considerada vinculante.
Information contained in this sheet is only indicative and may not be considered as binding



estore**enrollable** / panel**japonés**
roller**blinds** / panel**track**

nevaluz®
collections

blackOut



blackOut es un producto **nevaluz**®
blackOut is a product of **nevaluz**®

nevaluz®

www.nevaluz.com

Sevilla

Polig. Ind. Maza y Marín,
nave 16. 41400 Écija (Sevilla)

Tlf. 955 90 53 30 / 90

Fax. 955 90 31 11

info@nevaluz.com



Valencia

Travesía del Bovalar, 70
Pol. Ind. El Bovalar.

46970 Alaquàs (Valencia)

Tlf. 902 808 251

Fax. 902 808 252

nevaluzvalencia@nevaluz.com

México

Avenida Araucarias lote
28 manzana XVIII, entre
Av. Las Torres y Araucarias
en la Ciudad Industrial
Bruno Pagliai en Tejería,
Veracruz 91697 (México)

Tlf. 01 (229) 981 18 80

Fax: 01 (229) 981 18 86

nevaluzmexico@nevaluz.com

Perú

Centro Logístico Portada
de Lurín, Almacén F-18.
Autopista Panamericana Sur, km 38.
Punta Hermosa, Lima (Perú)

Tlf. 00 (511) 634 67 00

Tlf. 00 (511) 634 67 01

nevaluz@nevaluz.com.pe

