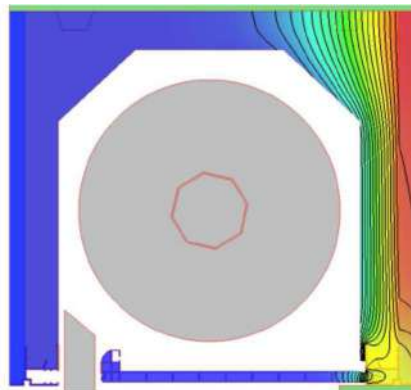
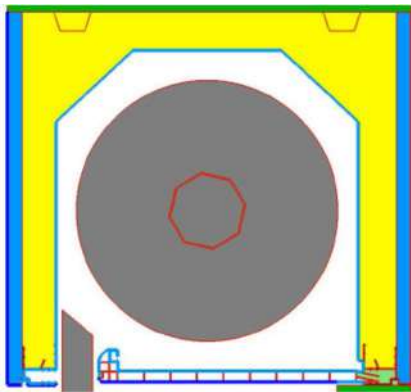


PLUS 30 BOX

(depth 300 mm – height 300 mm)

With flush casing window with inner wall (FI) and fit-in pvc system (CPVC)



Il contenuto del presente documento è di proprietà esclusiva di EDILCASS e ne è vietata la riproduzione anche parziale.

Node details

Primitives used for simulation:	11779
Frame width (Bf):	300.00 mm
Insulation panel's visible width (Bp):	-
Insulation panel's thickness (Dp):	-

External boundary conditions:

Temperature:	0.000 °C
Surface resistance:	0.04 m ² K/W

Internal boundary conditions:

Temperature:	20.000 °C
Surface resistance:	0.130 m ² K/W
Humidity:	65.00 %

Calculated results based on UNI EN ISO 10077-2:2017

Temperature difference indoor/outdoor:	20.000 °C
Conductivity 2D (Lf2D):	0.2714 W/mK

Trasmittance (U): **0.904 W/m²K**



ORDINE DEGLI ARCHITETTI DELLA PROVINCIA DI BARI -
RAMISANO
1393
LEONARDO

September 2018