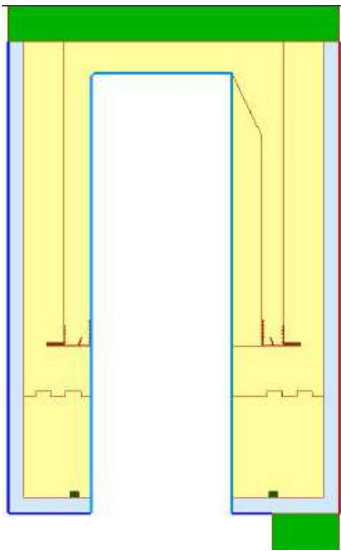


**SOLE BOX+EPS ELEMENTS A + B**  
(depth 299 mm – height 450 mm)  
**With flush casing window with inner wall**



Il contenuto del presente documento è di proprietà esclusiva di EDILCASS e ne è vietata la riproduzione anche parziale.

**Node details:**

Primitives used for simulation:	8991
Frame width (Bf):	465.00 mm
Insulation panel's visible width (Bp):	-
Insulation panel's thickness (Dp):	-

**External boundary conditions:**

Temperature:	0.000 °C
Surface resistance:	0.04 m <sup>2</sup> K/W

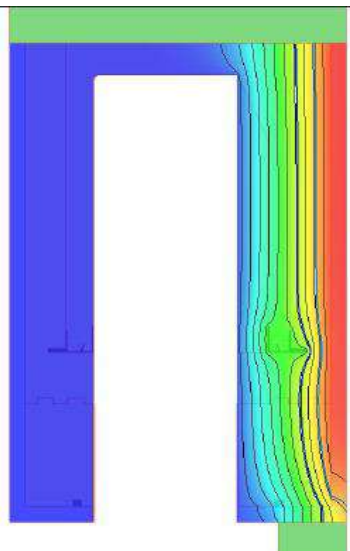
**Inner boundary conditions:**

Temperature:	20.000 °C
Surface resistance:	0.13 m <sup>2</sup> K/W
Humidity:	60.00 %

**Calculated results based on UNI EN ISO 10077-2:2012**

Temperature difference indoor/outdoor:	20.000 °C
Conductivity 2D (Lf2D):	0.228 W/mK

**Trasmittance (U): 0.489 W/m<sup>2</sup>K**



ORDINE DEGLI ARCHITETTI DELLA PROVINCIA DI BARI  
Dott. M. LEONARDO  
1393

July 2018

