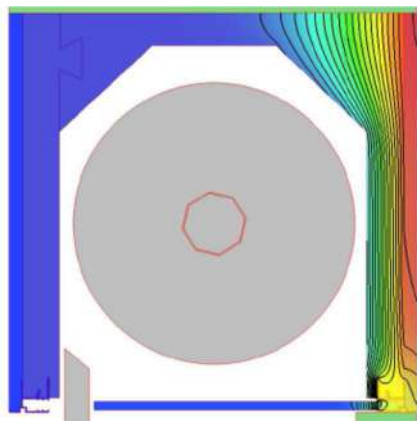
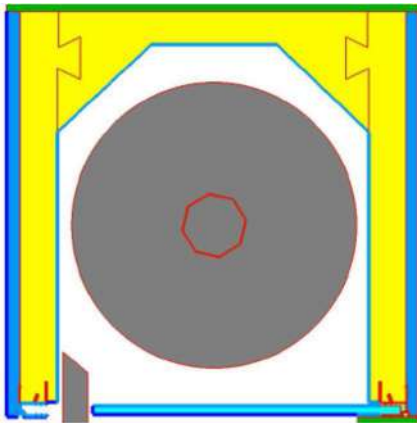


## MAXI BOX

(depth 372 mm – height 390 mm)

With flush casing window with inner wall (FI) and fit-in pvc/tex system (CPVC/TEX)



Il contenuto del presente documento è di proprietà esclusiva di EDILCASS e ne è vietata la riproduzione anche parziale.

### Node details

Primitives used for simulation:	16583
Frame width (Bf):	390.00 mm
Insulation panel's visible width (Bp):	-
Insulation panel's thickness (Dp):	-

### External boundary conditions:

Temperature:	0.000 °C
Surface resistance:	0.04 m <sup>2</sup> K/W

### Condizioni al contorno interne:

Temperature:	20.000 °C
Surface resistance:	0.130 m <sup>2</sup> K/W
Humidity:	65.00 %

### Calculated results based on UNI EN ISO 10077-2:2017

Temperature difference indoor/outdoor:	20.000 °C
Conductivity 2D (Lf2D):	0.3013 W/mK

Trasmittance (U): **0.772 W/m<sup>2</sup>K**



September 2018