

Natte

OF 5% / 10%

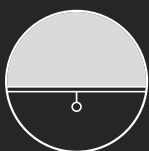
TN05A

FABRIC CODE

TN10A

A long lasting fabric, with outstanding performances for filtering daylight without obstructing the view to the outside world.

For interior.



Natte

OF 5% / 10%

TN05A

TN10A

FABRIC CODE

Yarn

Technical specifications	Average Values	Standard
Titer	115 tex	ISO 1889 (2009)
Weighted composition	Glass 34%, PVC 66%	ISO 3801 (1977)
Diameter	0.29 mm	
Environment		Oekotex standard 100



Fabric

Type of fabric	PVC-coated fiberglass fabric
Weave pattern	basket weave
Widths	fabric on rolls: 2500 mm (tolerance -0%, +5%)
Roll length (nominally)	25 m

Technical specifications	Average Values		Standard
	OF 5%	OF 10%	
Thickness	0.60 mm	0.57 mm	ISO/DIS 5084.2 (1996)
Mass	441 g/m ²	400 g/m ²	ISO 3801 (1977)
Fire resistance	M1	M1	NF P92-503 (1995)
	FR	FR	NFPA 701 (2010)
		C-s3, d0	EN 13501-1 (2010)
Volatile organic compounds (voc)	Class 1	Class 1	EN 13773
	complies	complies	DIBt (June 2004)
	complies	complies	AgBB (March 2008)
	complies	complies	AFSSET (2006)
	complies	complies	GREENGUARD
Breaking strength warp/weft	170 daN / 140 daN	150 daN / 140 daN	ISO 13934-1 (1999)
Elongation at break warp/weft	8,0% / 4,0%	4,2% / 4,6%	ISO 13934-1 (1999)
Tear resistancewarp/weft	6,8 daN / 8,0 daN	6 daN / 5,8 daN	ISO 4674 part 1 method A (2003)
Colorfastness (white excluded)	7 scale of blue	7 scale of blue	ISO 105 B02 (1994)
Air porosity	855 l/m ² /sec	1500 l/m ² /sec	ISO/DIS 9237 (1995)

Processing

General - specifications are purely indicative and may not be considered as binding. Colors may vary from the samples shown.

Cutting	crush or ultrasonic; railroad or width out of roll width
Welding	thermal, HF, ultrasonic, sewing
Cleaning	remove dust from the fabric surface, then wipe gently with a humid soft sponge while using a mild detergent

Natte

TN05A

OF 5%

118108 basalt
Width: 2500 mm



Solar Heat & Light Control Properties

	Ts	Rs	As	Tv	TVdiff	TVdir	Tuv	TVdif-h	Glare control
	6.7	9.8	83.5	6.2	0.6	5.6	6.1	4.7	Class 1

gtot

	A	B	C	D
	int.	int.	int.	int.
Values	0.66	0.65	0.54	0.30
Classes	0	0	0	2

118114 praline
Width: 2500 mm



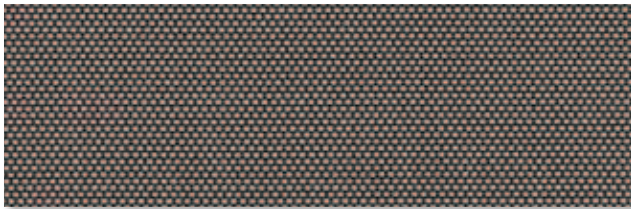
Solar Heat & Light Control Properties

	Ts	Rs	As	Tv	TVdiff	TVdir	Tuv	TVdif-h	Glare control
	6.5	6.5	87.1	6.2	0.5	5.7	6.2	4.6	Class 1

gtot

	A	B	C	D
	int.	int.	int.	int.
Values	0.68	0.66	0.55	0.30
Classes	0	0	0	2

118116 macchiato
Width: 2500 mm



Solar Heat & Light Control Properties

	Ts	Rs	As	Tv	TVdiff	TVdir	Tuv	TVdif-h	Glare control
	7.6	17.3	75.1	7.3	1.4	5.9	6.4	5.6	Class 1

gtot

	A	B	C	D
	int.	int.	int.	int.
Values	0.62	0.61	0.51	0.29
Classes	0	0	0	2

118118 night
Width: 2500 mm



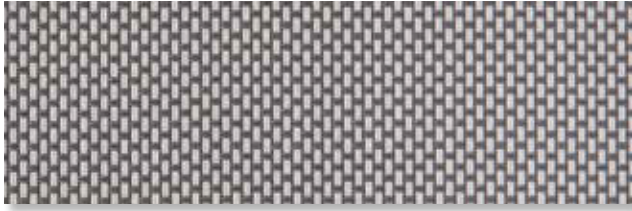
Solar Heat & Light Control Properties

	Ts	Rs	As	Tv	TVdiff	TVdir	Tuv	TVdif-h	Glare control
	6.0	5.6	88.4	5.8	0.4	5.4	5.8	4.4	Class 1

gtot

	A	B	C	D
	int.	int.	int.	int.
Values	0.69	0.67	0.55	0.30
Classes	0	0	0	2

127108 basics
Width: 2500 mm



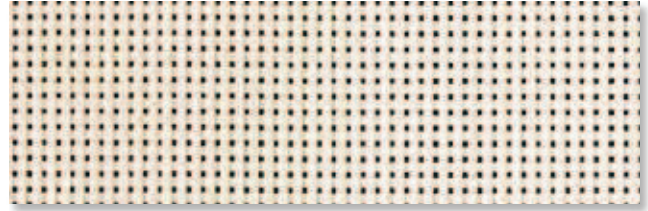
Solar Heat & Light Control Properties

	Ts	Rs	As	Tv	TVdiff	TVdir	Tuv	TVdif-h	Glare control
	16.9	37.8	45.3	14.5	8.9	5.6	6.2	12.0	Class 0

gtot

	A	B	C	D
	int.	int.	int.	int.
Values	0.51	0.51	0.45	0.28
Classes	0	0	1	2

127127 ivory
Width: 2500 mm



Solar Heat & Light Control Properties

	Ts	Rs	As	Tv	TVdiff	TVdir	Tuv	TVdif-h	Glare control
	27.8	56.4	15.7	26.9	21.5	5.4	6.0	23.1	Class 0

gtot

	A	B	C	D
	int.	int.	int.	int.
Values	0.42	0.42	0.39	0.26
Classes	1	1	1	2

150116 desert
Width: 2500 mm



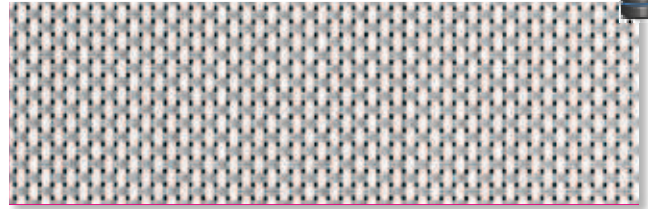
Solar Heat & Light Control Properties

	Ts	Rs	As	Tv	TVdiff	TVdir	Tuv	TVdif-h	Glare control
	22.7	58.6	18.7	20.3	14.1	6.2	6.7	17.2	Class 0

gtot

	A	B	C	D
	int.	int.	int.	int.
Values	0.40	0.41	0.38	0.26
Classes	1	1	1	2

150117 silver
Width: 2500 mm



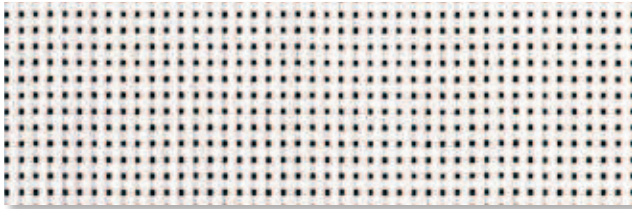
Solar Heat & Light Control Properties

	Ts	Rs	As	Tv	TVdiff	TVdir	Tuv	TVdif-h	Glare control
	20.2	50.6	29.1	18.4	11.4	7.0	7.6	15.3	Class 0

gtot

	A	B	C	D
	int.	int.	int.	int.
Values	0.44	0.45	0.41	0.26
Classes	1	1	1	2

150150 snow
Width: 2500 mm



Solar Heat & Light Control Properties

	Ts	Rs	As	Tv	TVdiff	TVdir	Tuv	TVdif-h	Glare control
	24.3	64.5	11.2	22.8	16.4	6.4	7.0	19.3	Class 0

gtot

	A	B	C	D
	int.	int.	int.	int.
Values	0.37	0.38	0.36	0.25
Classes	1	1	1	2