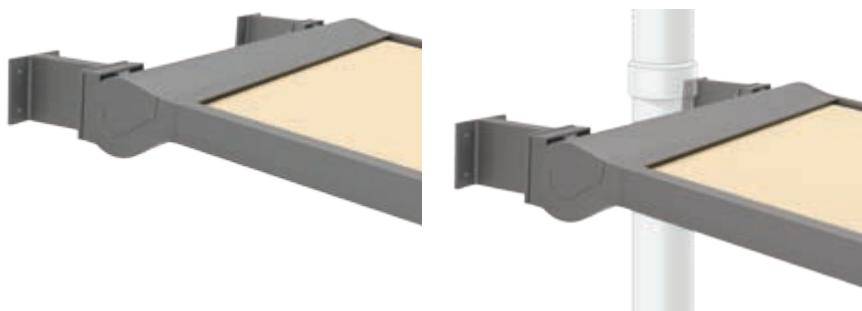
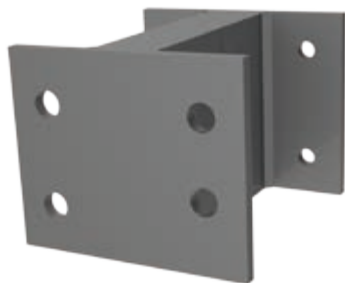


Installation with stand off bracket (special bracket)

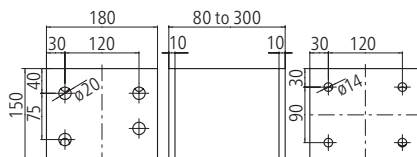


80 to 300 mm gaps can be bridged using the stand off bracket.

Plaza Viva with stand off bracket, e.g. to overcome a soil pipe



Stand off bracket



Stand off bracket with wall bracket

Installation on roof using a stilt (special bracket)

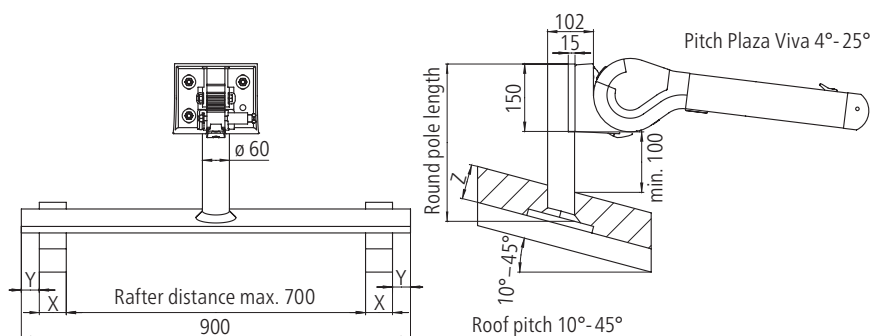


Use of stilt

This special bracket is used for example under roof tiles. The longer plate is mounted under the roof tiles and sealed again on site. This mounting holes are drilled on site after determining the position.
Please note: We need the house roof angle and length of the round pole (stilt) to install the stilt.



Three-piece special bracket (mounting plate, stilt, wall bracket)



Use for installation on a roof

X = rafter thickness

Y = stilt adjustment range = $(900 - \text{rafter distance} - 2x)/2$

Z = height of roof structure (tiles etc. ...)

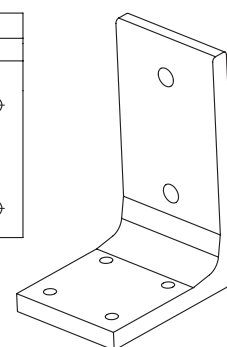
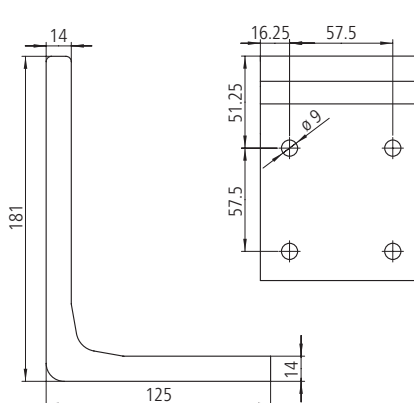
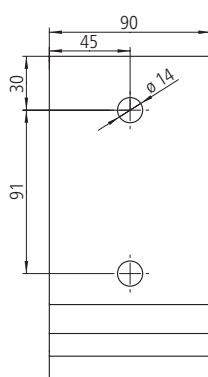
Installation with angle bracket (special bracket)



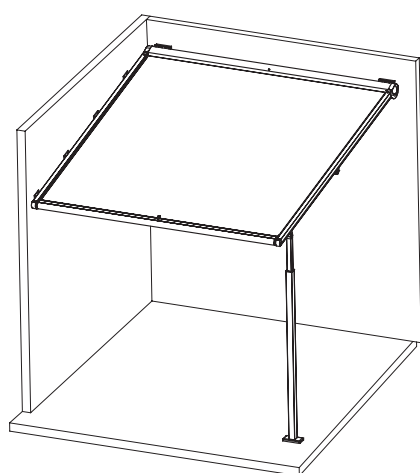
Update



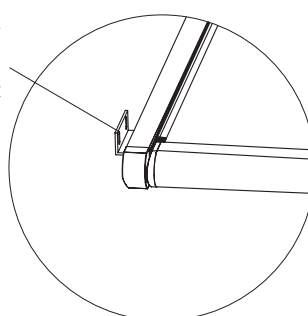
Angle bracket with posts



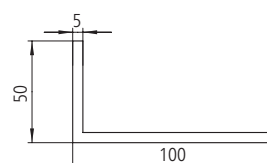
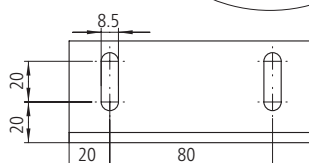
Installation of Plaza Viva laterally on a wall or in a niche



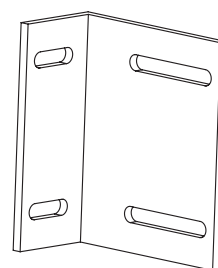
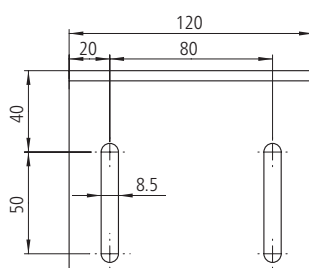
100 x 50 x 5 x 120 mm angle bracket



The Plaza Viva can also be mounted on a lateral wall, niche or next to a Terrazza using the 100 x 50 x 5 x 120 mm wall-mount angle bracket.

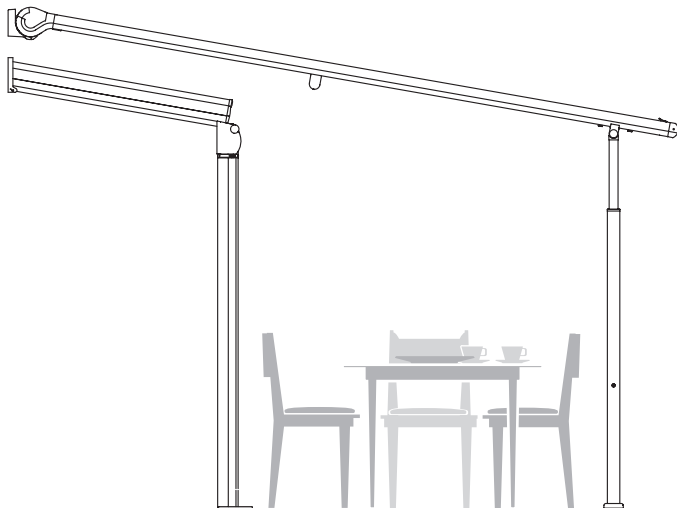


100 x 50 x 5 x 120 mm wall-mount angle bracket



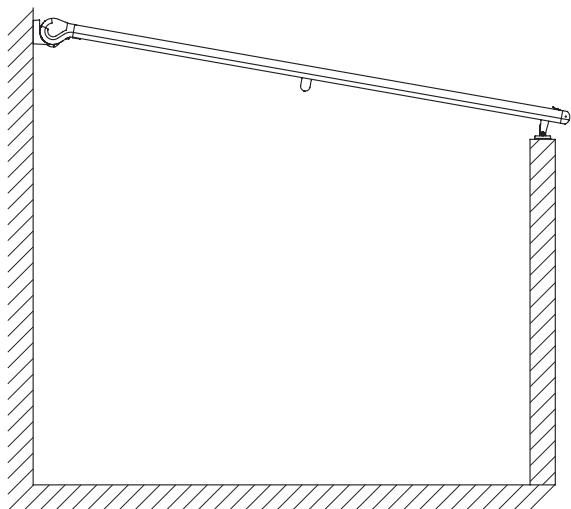
Other application examples

Plaza Viva installation beyond a patio roof and/or conservatory



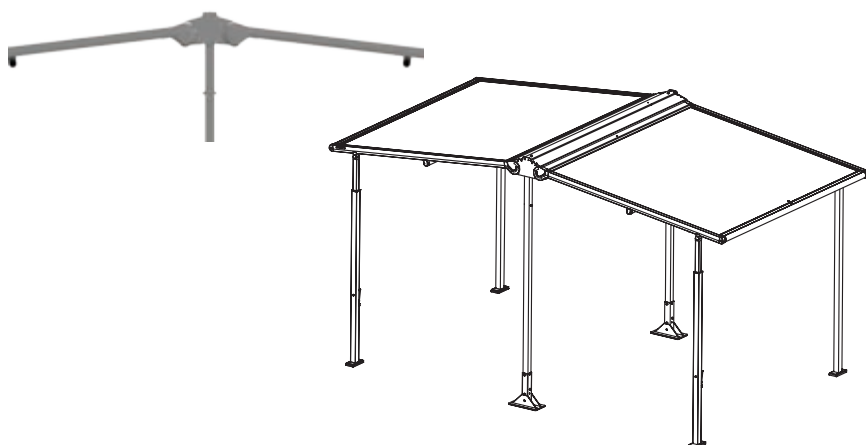
The Plaza Viva is installed on the wall on site using wall brackets and the projection is extended (the head clearance height must be noted for this). With installation without telescopic posts, the Plaza Viva can also be fixed onto the conservatory using support brackets.

Installation on a wall (without posts)



If there is a wall on the opposite side, it is possible to mount the Plaza Viva onto the wall without posts using adjustable support brackets.

Duofix supporting structure

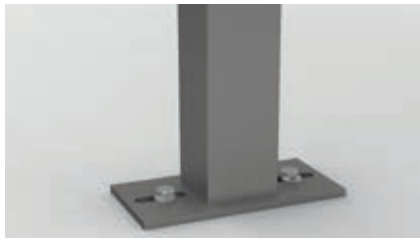


Two Plaza Viva can be mounted on our Duofix supporting structure to achieve an even larger area of sun shade.

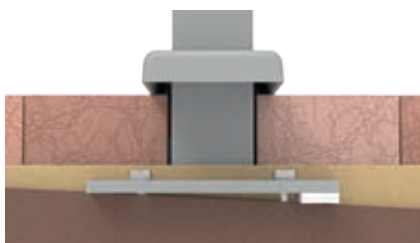
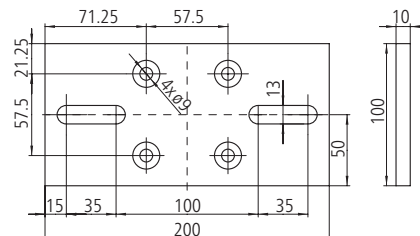


Post installation

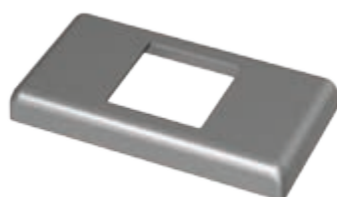
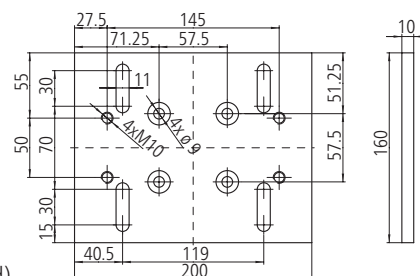
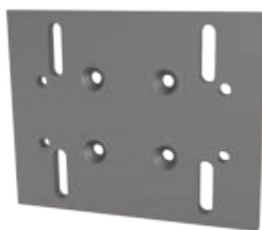
Standard/adjustable post plates



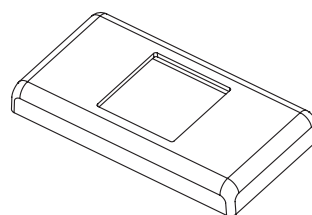
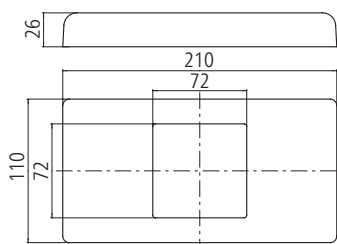
Standard post plate (installation on even ground)



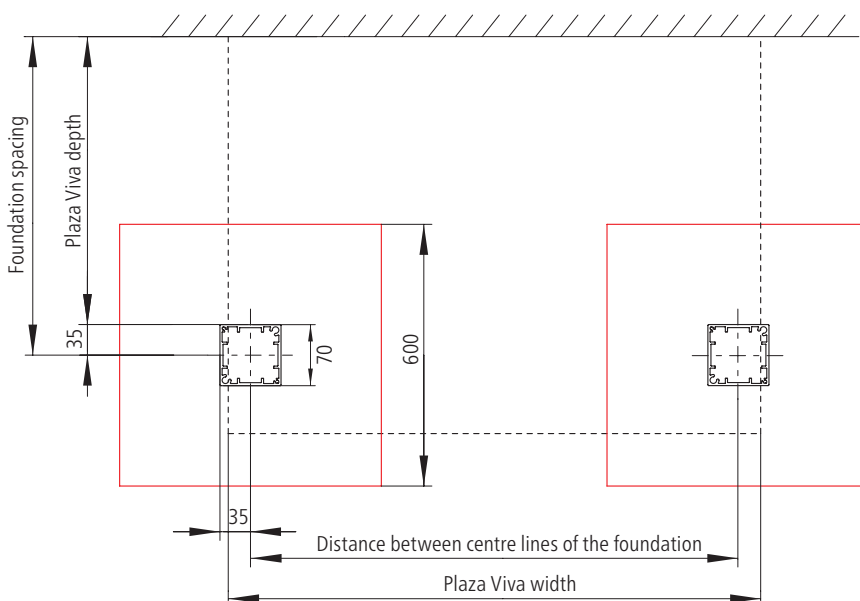
Adjustable post plate/for Krinner screw foundation systems (installation on uneven ground)



Cover cap for post plate



Post foundation planning

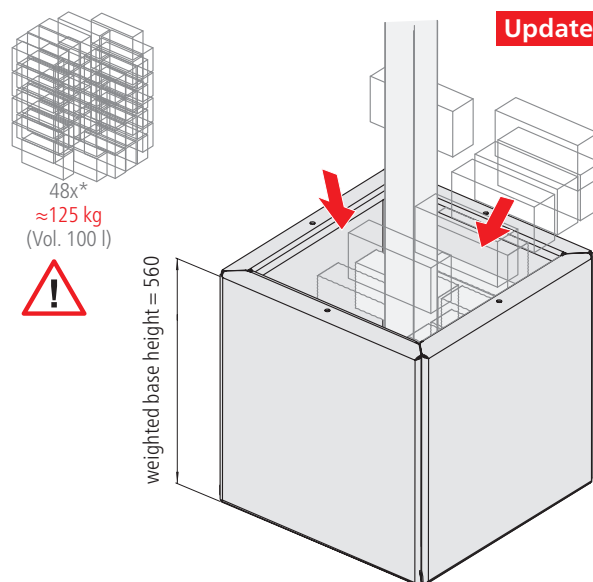
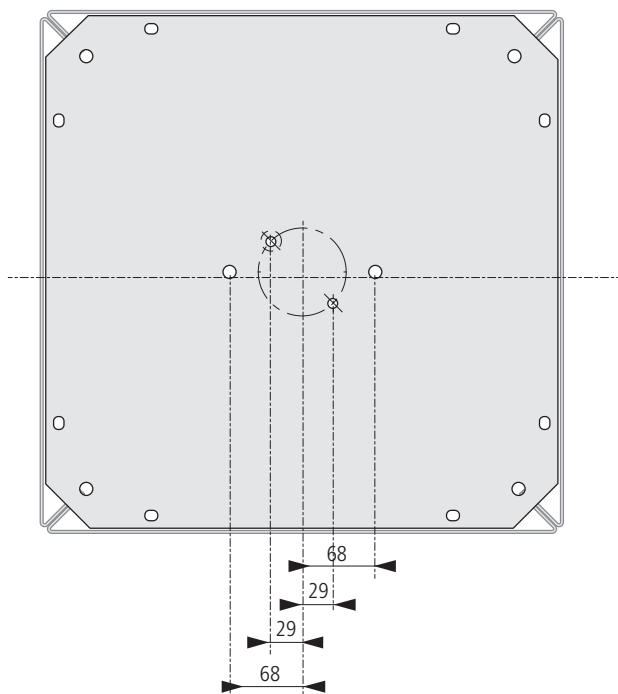
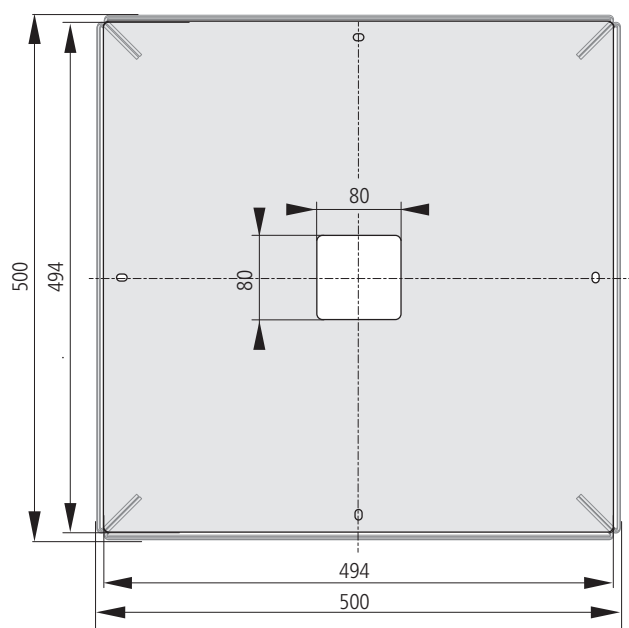


Note

The size of the foundation depends on the quality of the ground, the acting loads and the climate conditions (frost depth). The size specified here assumes unfavourable conditions. A smaller foundation may also be adequate depending on the structural conditions.

Post installation weighted base for posts

02



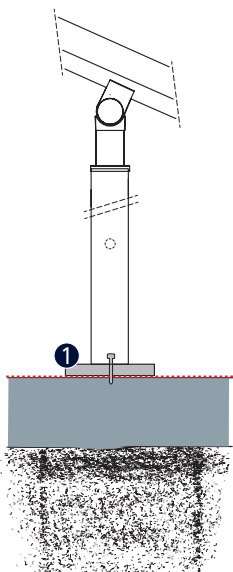
Note:

- The weighted base for posts has a size of approx. 500 x 500 mm, the height is approx. 560 mm.
- As a weighting it is recommended to use 48 stones in size 200 x 100 x 60 mm. This corresponds to a weight of about 125 kg.
- The weighted base for posts is not suitable for use on wind-exposed places.

Post installation

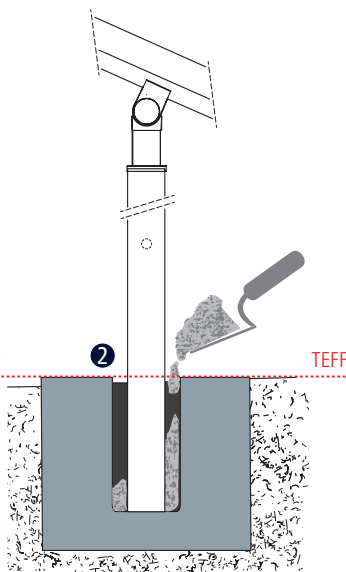
Post fixation on concrete floor slabs ①

The standard configuration is the installation of the Plaza Viva with post plates on a given concrete floor. The finished cut length of the post is always indicated on the assembly sheet.



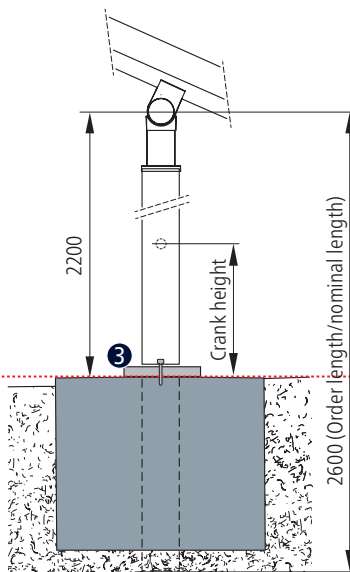
Bucket foundation ②

Posts are securely fitted into a strong non moving base. The concrete is poured and set at the end of the installation, which simplifies the alignment of the posts.



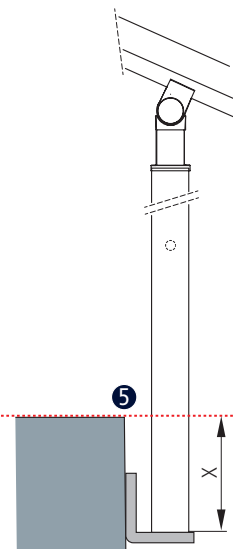
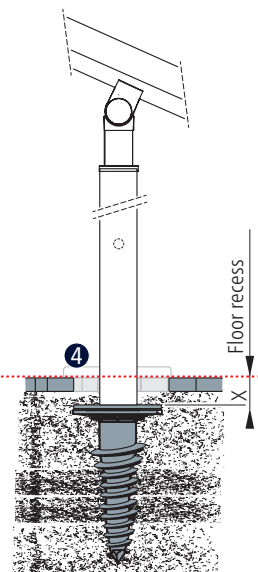
Deep-seated foundation ③

The easy and flexible screw attachment on a 700 (w) x 800 (h) x 700 (d) mm screw foundation is carried out like the standard fixation (item 1). The reference height for the crank position as well as for the post height is always TEFF.



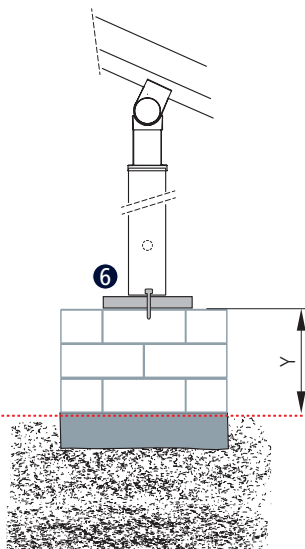
Screw foundation ④

When fixing the posts into soil/earth they are an alternative to conventional foundation fixing. The post length as mentioned on the mounting sheet is increased by the floor level (X).



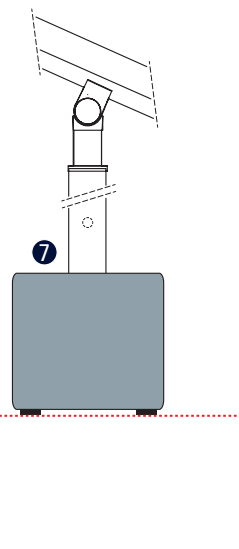
Mounting with angle bracket ⑤

Is suitable, for example, when mounting in front of a balcony or a terrace. The calculated post length is increased by the floor level (X).



Mounting on wall ⑥

When the post is mounted on a wall, the height of the post is reduced by the height of the wall (Y).



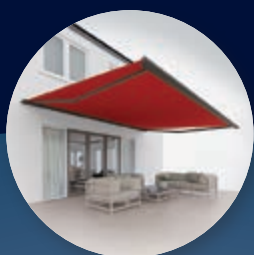
Weighted base for posts ⑦

If it is not possible to fix the post into the ground then the base option can be used. For example a public/pedestrian area, indoor installation, or on a balcony.

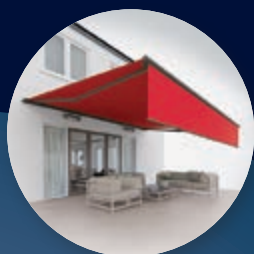
TEFF: Top edge of finished floor
X: Floor recess
Y: Height wall



Premium quality
made in Germany



Awning



Awning
with Valance Plus
and Tempura



Awning
with Valance Plus
and Paravento



Pergola awning
Plaza Viva
and Paravento



Pergola awning
weinor PergoTex II
and Tempura



Pergola awning
weinor PergoTex II
with VertiTex II



Terrazza
patio roof
with Sottezza II
sun protection



Terrazza Pure patio roof
with lateral SUPER LITE
fixed glazing



Glasoase® with
conservatory awning
WGM Top and full glass
sliding door w17 easy

AWNINGS

PERGOLA AWNINGS

CUSTOMISED, SYSTEMISED SOLUTIONS

PATIO ROOFS AND GLASOASE®

